



SPECIALS

MARCH | APRIL 2024

NEW ZEALAND

COMPOSITES | TOOTH WHITENING
CEMENTS | ADHESIVES | ETCHANTS
SEALANTS | AMALGAMS
ACCESSORIES | EQUIPMENT

TAKE-HOME WHITENING

3+1*
BUY 3, GET 1 FREE

12+6*
BUY 12, GET 6 FREE



POLA DAY

HYDROGEN PEROXIDE BASED ADVANCED TRAY TOOTH WHITENING SYSTEM

- Available in **7.5%** and **9.5% hydrogen peroxide**
- High water content
- From 30 minutes once a day



POLA NIGHT

CARBAMIDE PEROXIDE BASED ADVANCED TRAY TOOTH WHITENING SYSTEM

- Available in **10%, 16%** and **22% carbamide peroxide**
- High water content
- From 45 minutes once a day



POLA DAY CP

SUPER FAST TRAY TOOTH WHITENING SYSTEM

- Available in **35% carbamide peroxide**
- From just 15 minutes per day tray wear time
- Fluoride Releasing
- Neutral pH



POLA LIGHT

ADVANCED TOOTH WHITENING SYSTEM

- Available in **6% hydrogen peroxide**
- Reduced patient consult time
- Entry level whitening option
- Great front desk conversation starter



SOOTHE

DESENSITISING GEL

- Available in **6% potassium nitrate and 0.1% fluoride**
- Instant relief of sensitivity - use before or after whitening treatment



POLA FOR ALIGNERS

STRAIGHTEN AND BRIGHTEN TOGETHER

- Available in **10% carbamide peroxide**
- The greatest patient comfort in a whitening kit
- High viscosity gel ensures it can be easily and securely placed into the aligner tray, staying in place

POLA 4 X 1.3g MINI KIT
POLA 10 X 1.3g SYRINGE KIT
POLA 50 X 3g BULK KIT
POLA 50 X 3g DISPENSER PACK
POLA FOR ALIGNERS 4 X 3g
SOOTHE 4 X 1.2mL SYRINGE MINI KIT
POLA LUMINATE
POLA LIGHT KIT

POLA LUMINATE

BRUSH ON & GO!

- No trays required - quick and easy professional brush on tooth whiteners
- **6% hydrogen peroxide** low viscosity fast drying gel



IN OFFICE WHITENING

3+1*
BUY 3, GET 1 FREE

POLA RAPID 1 PATIENT KIT WITH OPTRAGATE
POLA RAPID 3 PATIENT KIT WITH OPTRAGATE
POLA RAPID 1 PATIENT KIT
POLA RAPID 3 PATIENT KIT

POLA RAPID

SUPER FAST WHITENING

- Available in **35% hydrogen peroxide**
- Fast: from 3 x 8 minute applications
- Non-stick gel for faster application and removal
- Auto-mix syringe for direct application



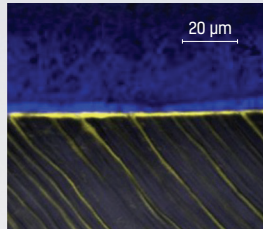
THE FUTURE OF COMPOSITES



DENTAL ADVISOR
LAB PERFORMER
**SELF-CURE
COMPOSITE**



- ✓ Self-curing unlimited bulk fill
- ✓ Gap-free interface
- ✓ High bond strength
- ✓ Just two simple steps
- ✓ High strength



STELA GAP-FREE BONDING INTERFACE

A confocal micrograph of a gap-free Stela-dentin interface. Note the penetration depth of Stela Primer [yellow] within the dentin tubules.

Source: Dr Salvatore Sauro



SCAN FOR
INFORMATION
ON STELA

- STELA AUTOMIX 1x 8g SYR REFILL
- STELA AUTOMIX INTRO KIT
1x 8g SYR, STELA PRIMER 5mL
- STELA CAPSULE REFILL 50 CAPS
- STELA CAPSULES INTRO KIT
10 CAPS, STELA PRIMER 5mL
- STELA PRIMER REFILL 5mL BT

PURCHASE 1 STELA AUTOMIX SYRINGE KIT AND GET 1 STELA SYRINGE REFILL KIT **FREE**

RISK FREE TRIAL*

Order 1 get 1 free, If you are not 100% satisfied return the unopened refill kit for a full refund.



*Conditions apply - Must be returned unopened within 30 days from date of invoice. Limited to 1 trial per clinic.

COMPOSITES

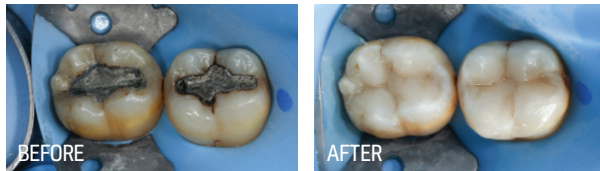


LUNA 2

UNIVERSAL COMPOSITE

Luna 2 is the next generation Luna universal composite. Luna 2 has an improved unique blend of fillers that were researched and developed at SDI to deliver the enhanced handling, very high radiopacity and reliable mechanical properties. Luna 2 is BPA free for health-conscious patients. Luna 2 makes placing a composite easier than ever.

LUNA 2 4g SYRINGE
LUNA 2 5g COMPLET
LUNA 2 INTRO KIT



Images courtesy of Dr Michael Chan - Australia



Scan QR code for more information



PERFECT CREAMY & SMOOTH HANDLING



BPA FREE FORMULATION



HIGH FLEXURAL STRENGTH
130MPa



HIGH RADIOCAPACITY
250% AI



HIGH COMPRESSIVE STRENGTH
360MPa



HIGH POLISH AND WEAR RESISTANCE

4+1* BUY 4 GET 1 FREE



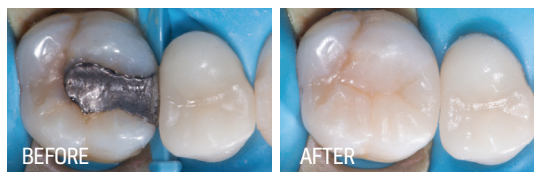
LUNA FLOW AND LUNA FLOW LV

UNIVERSAL FLOWABLE COMPOSITE

Luna Flow is a new extra strong flowable composite that is available in two viscosities. With a blend of fillers in different ultrafine sizes to optimize handling, mechanical and optical properties, Luna Flow offers high radiopacity, control over the application, easy and accurate shade matching with color stability, excellent strength and wear resistance.

Such properties make Luna Flow a fantastic universal option for liner; base; provisional or restoration repairing; and Class V; amongst other indications.

LUNA FLOW/LV 2g SYRINGE
LUNA FLOW/LV BULK KIT 5 X 2g SYRINGES
LUNA FLOW/LV INTRO KIT 4 X 2g SYRINGES



Images courtesy of Dr Bill Gergis, Founder of Biomimetic Aesthetic Dentistry - Australia



Scan QR code for more information

EXAMPLE OF FLOW

LUNA FLOW
Regular viscosity~



LUNA FLOW LV
Low viscosity~



~At 40 seconds



VISCOSITY OPTIONS
Regular (Luna Flow) and low viscosity (Luna Flow LV)



GREAT HANDLING
Thixotropic for total control over application.



HIGH COMPRESSIVE STRENGTH
420MPa



HIGH POLISH FOR EXCELLENT RESULTS



HIGH RADIOCAPACITY
265% AI



HIGH FLEXURAL STRENGTH
128MPa

RADII XPERT

SMARTER DESIGN.
OPTIMAL CURE
EVERY TIME.

Radii Xpert's unique target assist technology enables you to correctly position the light and be confident of the angulation before curing.



RADI-CAL CX

COLLIMATED FOR
A DEEPER, MORE
RELIABLE CURE

The collimated beam of the Radii-Cal CX delivers curing uniformity across all curing depths. This ensures a fast and predictable cure for all restorations.



ULTRAMAT 2

HIGH SPEED
MULTI-USE TRITURATOR

- Safety feature
- Consistent accurate trituration
- Practical
- Multi-use mixer
- High energy output
- Low energy usage



ADHESIVE

SDI | ZIPBOND
UNIVERSAL ADHESIVE

THE ALL-IN-ONE
ADHESIVE SOLUTION
FOR EVERY SITUATION

IMPROVED BOND STRENGTH AND DEFENDS
AGAINST CLINICAL VARIABILITY

- Consistent bond strengths to dentine and enamel
- Wet and dry dentine bonding
- Proprietary combination of adhesive monomers including MDP
- Predictable bond strengths to indirect substrates
- Effective hybridisation
- Exceptional control
- Highly aesthetic
- Pleasant aroma

ZIPBOND 5ML BOTTLE KIT



29 CLINICAL EVALUATORS
862 TOTAL USES
93% CLINICAL RATING
ZIPBOND 2021

- Dental Advisor rates Zipbond ++++ ½ or **93% clinical rating**
- 862 uses and **zero post op sensitivity**
- 97% of Dental Advisor evaluators rated it either equal or better than their existing adhesive
- **100% would recommend Zipbond** to a colleague

2+1*
BUY 2, GET 1 FREE